



SERVICE DIRECTIVE BULLETIN

SERVICE DIRECTIVE BULLETIN NO. 0097

Page 1 of 4

DATE: February 3, 2005

1. SUBJECT: Incorrect Installation Hardware on Seat Belt Bracket, P/N 28-11467-1
2. MODEL: F-28F, 280F, and 280FX
3. EFFECTIVITY: All F-28F serial numbers prior to S/N 816
All 280F serial numbers
All 280FX serial numbers prior to S/N 2108

4. BACKGROUND:

During final inspection of a production F-28F aircraft, an inspector found the seat belt brackets, P/N 28-11467-1, installed with AN525 series screws instead of the AN3 series bolts required by the engineering drawings. A review of the production records did not establish how many aircraft potentially have incorrect hardware installed.

This Service Directive Bulletin establishes a one time inspection to determine if the correct hardware is installed in the seat belt brackets, P/N 28-11467-1.

5. COMPLIANCE:

Before the next 5 hours time in service or at the next periodic (50, 100, or annual) inspection, which ever comes first, inspect the seat belt bracket, P/N 28-11467-1, installation for the correct hardware in accordance with the instructions in paragraph 5.1.

NOTE

An owner/operator holding a pilot certificate issued under 14 CFR Part 61 may perform the visual inspection required by this Service Directive Bulletin. If the incorrect hardware is installed in the seat belt bracket(s), the owner/operator holding a pilot certificate under 14 CFR Part 61 is not authorized to install the correct hardware.

February 3, 2005

5.1. INSPECTION:

NOTE

Perform all maintenance in accordance with the applicable aircraft model maintenance manual unless specific instructions are provided.

- A. Remove the seat backs and cushions.
- B. Remove the fiberglass seat deck.
- C. If required for access, remove the outboard portion of the pilot's and copilot's seat belt assemblies.
- D. If required, lift up the backwall upholstery to gain access to the seat belt brackets (See Figure 1).

NOTE

The AN525 series screws are authorized for the remaining hardware in the backing doubler for the seat belt bracket.

- E. Inspect the seat belt bracket installation for the correct hardware (See Figure 2).
- F. If AN3 series bolts are installed in the seat belt brackets, reassemble the aircraft and return it to service.
- G. If AN525 series screws are installed in the seat belt brackets, remove the screws and replace with AN3-5A bolts and AN960-10 washers. After replacing the hardware, reassemble the aircraft and return it to service.

5.2. PARTS:

Description	Part Number	Quantity
Bolt	AN3-5A	6 Ea
Washer	AN960-10	6 Ea

February 3, 2005

6. SPECIAL TOOLS: None
7. ESTIMATED MAN-HOURS:

1.0 man-hour for the visual inspection and an additional .5 man-hours to install the correct hardware, if required.
8. WARRANTY: Per Enstrom New Aircraft Warranty Policy.
9. WEIGHT CHANGE: N/A
10. LOG BOOK ENTRY: Enter compliance with this Service Directive Bulletin.
11. REPETITIVE INSPECTIONS: N/A



Figure 1. Seat Belt Bracket Location

February 3, 2005

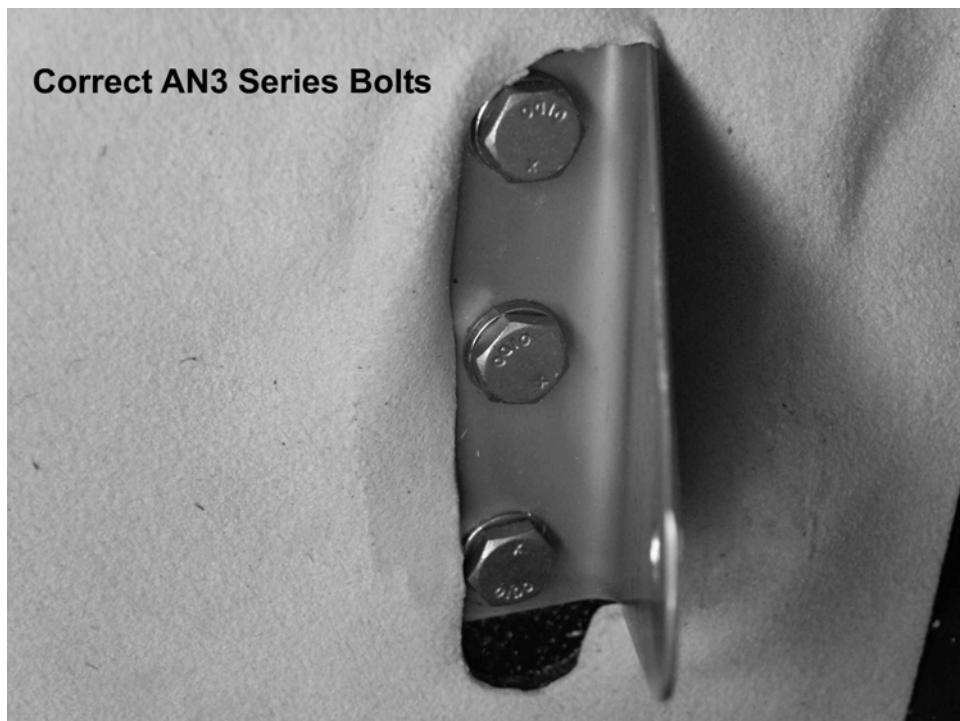


Figure 2. Seat Belt Bracket Installation Hardware