



SERVICE DIRECTIVE BULLETIN

Service Directive Bulletin No. 0058
Page 1 of 5

Date: July 27, 1982

Subject: Removal of the Induction Pressure Relief Valve

Models: F-28C, F-28C-2 and 280C

Effectivity: All F-28C and F-28C-2 Models prior to and including S/N 522-2.
All 280C Models prior to and including S/N 1226.

Compliance: Within 50 hours time in service after the effective date of this Service Directive Bulletin.

This modification removes the pop-off valve, caps the resulting induction tube hole and incorporates an overboost caution light system similar to the system utilized in F-Model Enstrom helicopters.

It continues to be the pilot's responsibility to prevent engine overboost by observing the red line on the manifold pressure gauge. The overboost caution light illuminates as manifold pressure approaches the overboost condition. See the latest issue of Avco Lycoming Service Bulletin 369 on overboost inspection requirements.

To incorporate the modification refer to Figure 1 to remove pop-off valve and cover the resulting induction tube opening. Figures 2 thru 4 detail the installation of the pressure switch, overboost caution light, and the related electrical connections.

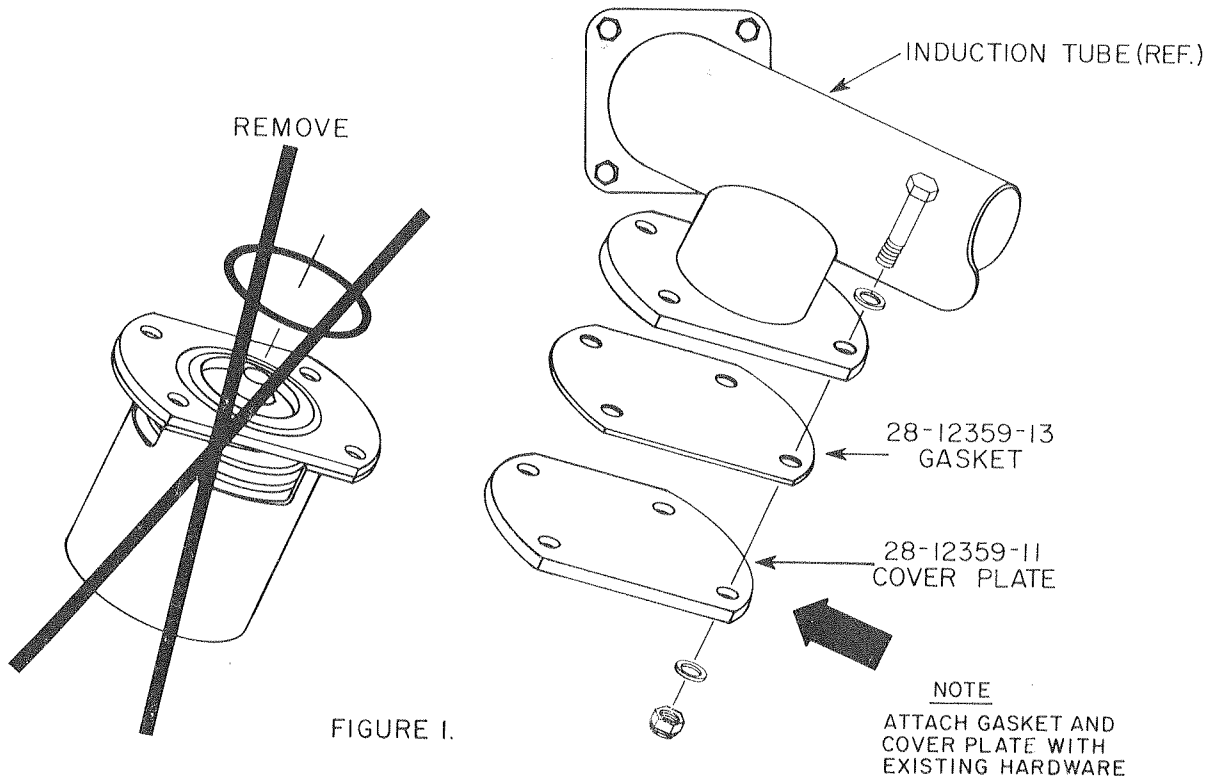


SERVICE DIRECTIVE BULLETIN

Number 0058
Page 2 of 5

Parts required:

Part Number	Nomenclature	Quantity
28-12359-11	Cover Plate	1
28-12359-13	Gasket	1
MS25331-8	Light Housing	1
1815	Lamp	1
AN917-1D	Tee	1
AN911-1D	Fitting	1
ECD079-11	Pressure Switch	1
3028-3/32	Shrink Tubing	6"
AWG-22-8503-9	Wire	60"
AA-521-08	Terminal	1
AA-532-06	Terminal	1
28-18092-11	Placard	1
HHJA	Fuse Retainer	1
3AG-1A	Fuse	1
SST1M-MP	Cable Ties	15





SERVICE DIRECTIVE BULLETIN

Number 0058

Page 3 of 5

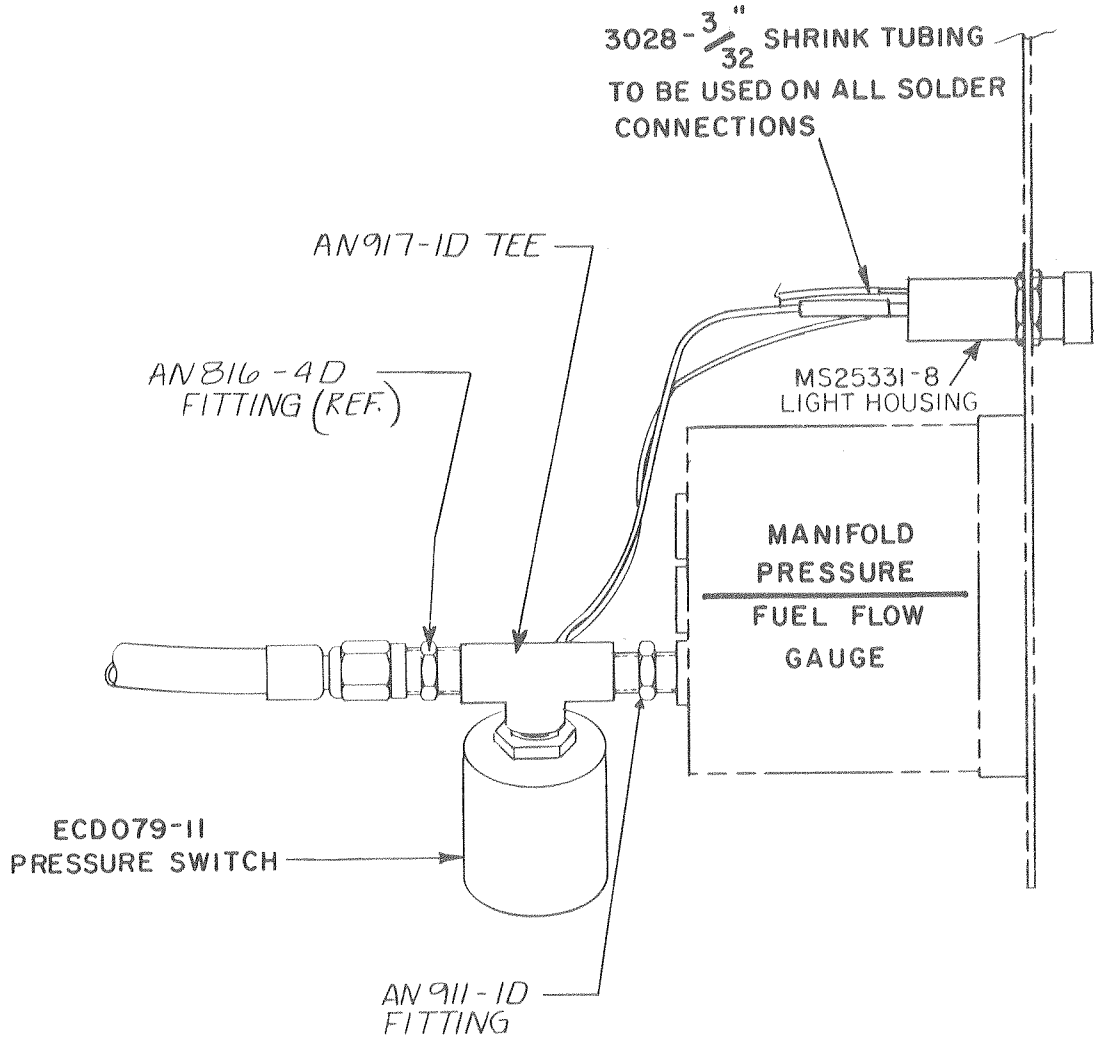


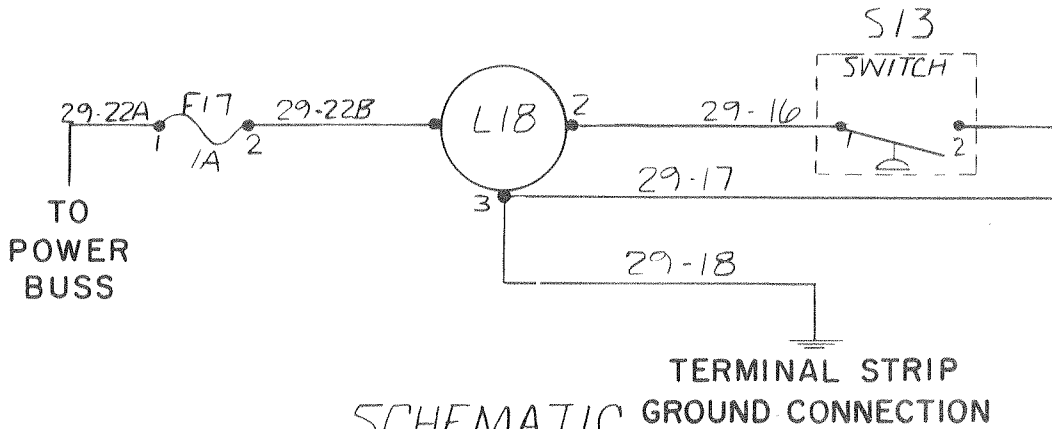
FIGURE 2



SERVICE DIRECTIVE BULLETIN

Number 0058

Page 4 of 5



SCHEMATIC
OVERBOOST WARNING

WIRE NO.	TERMINAL 'B'	FROM	TO	TERMINAL 'C'	'A' LENGTH	WIRE SIZE
29-22A	AA-521-08	POWER BUSS	F17-1	FUSE RET. (SOLDER)	3"	22
29-22B	FUSE RET. (SOLDER)	F17-2	L18-1	SOLDER	30"	22
29-16	SOLDER	L18-2	S13-1	INTERNAL	FURNISHED 20"	20
29-17	SOLDER	L18-3	S13-2	INTERNAL	FURNISHED 20"	20
29-18	AA-532-06	TERMINAL STRIP GRD. CONN.	L18-3	SOLDER	24"	22

FIGURE 3



SERVICE DIRECTIVE BULLETIN

Number 0058

Page 5 of 5

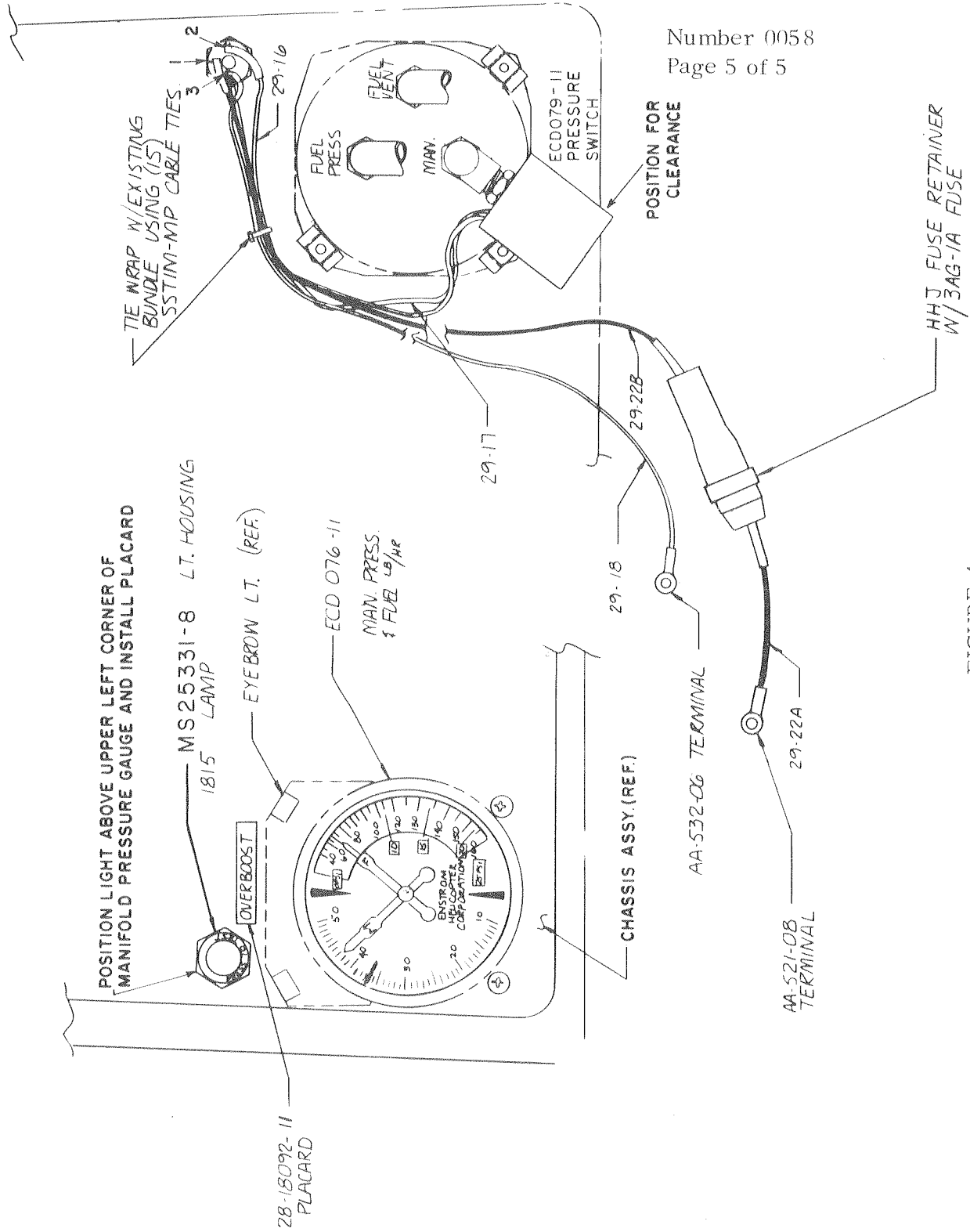


FIGURE 4