



SERVICE DIRECTIVE BULLETIN

SERVICE DIRECTIVE BULLETIN NO. 0099

Page 1 of 4

DATE: March 29, 2006

1. SUBJECT: Non-Conforming Tie Rod Assemblies, P/N 28-16498-9 & 28-16498-101
2. MODEL: F-28F, 280F, and 280FX

NOTE

A number of F-28C and 280C models are modified with the throttle correlator installation. Refer to paragraph 5, COMPLIANCE, of this Service Directive Bulletin for determining effectivity on F-28C/280C helicopter equipped with the throttle correlator.

3. EFFECTIVITY: F-28F: S/Ns 815 through 818, and Refer to paragraph 5, COMPLIANCE
280F: Refer to paragraph 5, COMPLIANCE
280FX: S/Ns 2088 through 2121, and Refer to paragraph 5, COMPLIANCE

4. BACKGROUND:

During the final inspection of newly manufactured tie rod assemblies, P/N 28-16498-9 and 28-16498-101, it was determined that the tie rod assemblies did not conform to the FAA approved engineering drawings. Review of the previous work orders of the tie rod assemblies showed the possibility of previously manufactured tie rod assemblies also not conforming to the approved drawings.

This Service Directive Bulletin (SDB) provides instructions for determining whether the tie rod assemblies, P/N 28-16498-9 & 28-16498-101, installed in the model helicopters listed above or in spare/repair parts stock, conform to the FAA approved engineering drawings.

March 29, 2006

5. COMPLIANCE:

For the aircraft with serial numbers listed in paragraph 3: at or before the next 100 hour/annual inspection, inspect the tie rods, P/N 28-16498-9 and 28-16498-101, in accordance with (IAW) paragraph 5.1.

For aircraft that have had new tie rods, P/N 28-16498-9 and/or 28-16498-101, installed after February, 2001: at or before the next 100 hour/annual inspection, inspect the tie rods, P/N 28-16498-9 and/or 28-16498-101, IAW paragraph 5.1.

For tie rods, P/N 28-16498-9 and/or 28-16498-101, in spare/repair parts inventory: inspect the tie rods, P/N 28-16498-9 and/or 28-16498-101, IAW paragraph 5.1.C.

5.1. INSPECTION:

NOTE

Perform all maintenance in accordance with the applicable maintenance manual for the model aircraft.

- A. As applicable, remove the pilot's collective cover, the seat deck, and cockpit floor panels to access the throttle correlator assembly on the left side of the seat structure.
- B. Remove the tie rod, P/N 28-16498-9 and /or 28-16498-101, from the throttle correlator assembly (Refer to Figure 1).
- C. Determine if the tie rods conform to the approved drawings using the following procedures:
 1. Using a gram scale, weigh the tie rod, P/N 28-16498-9.
 - a. If the tie rod weighs approximately 30.5 grams, the tie rod does not conform to the approved drawings and must be removed from service and/or parts inventory.
 - b. If the tie rod weighs approximately 36.5 grams, the tie rod conforms to the approved drawing and may be returned to service and/or parts inventory.
 2. Using a gram scale, weigh the tie rod, P/N 28-16498-101.
 - a. If the tie rod weighs approximately 31.0 grams, the tie rod does not conform to the approved drawings and must be removed from service and/or parts inventory.

March 29, 2006

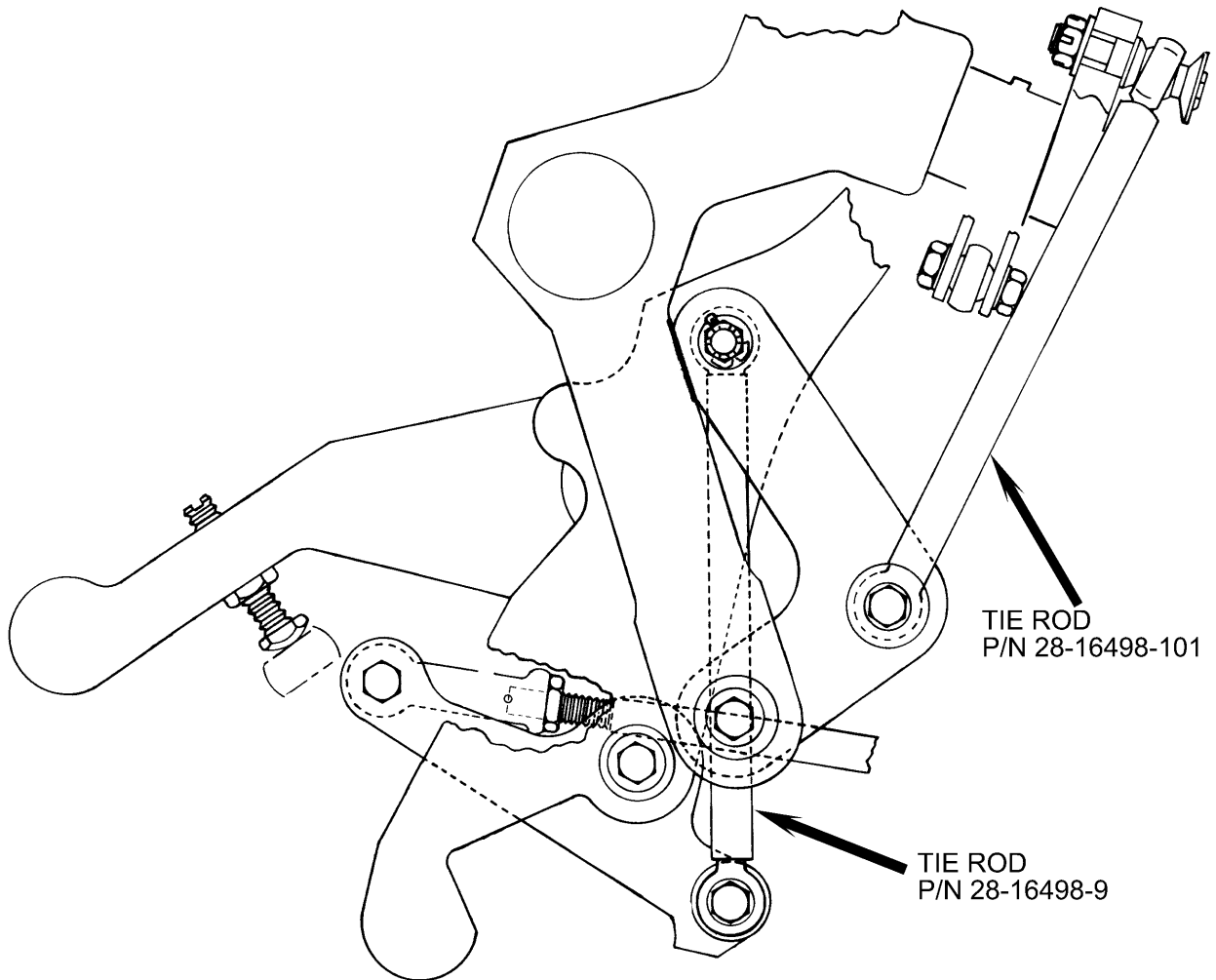


Figure 1. Tie Rods, P/N 28-16498-9 & 28-16498-101