



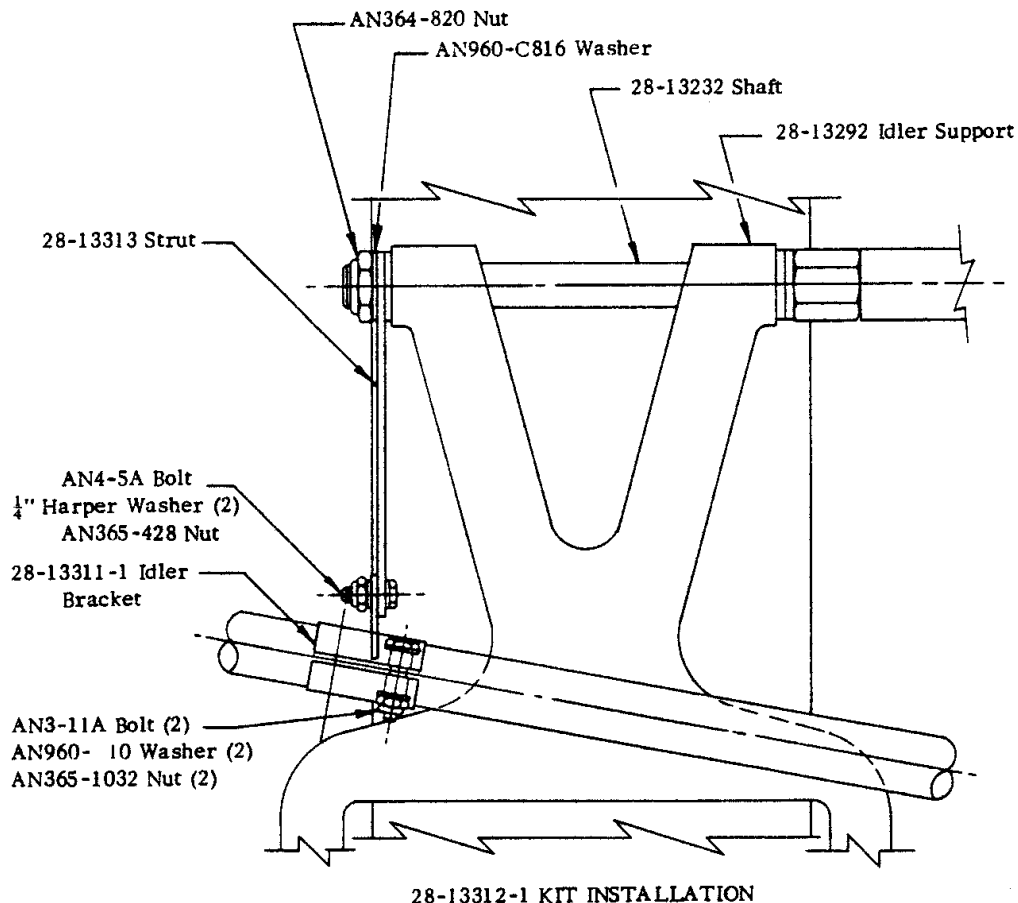
SERVICE INFORMATION LETTER

SERVICE INFORMATION LETTER NO. 0064
Page one

Date: June 1, 1977
Subject: Idler Stabilizer Installation Kit
Models: F-28A, 280, F-28C, 280C
Effectivity: All Serial Numbers

The Enstrom Helicopter Corporation has developed a belt idler stabilizer installation which extends the time intervals between idler tracking. Positive idler tracking results by using this simple installation which consists of two small brackets and their attaching hardware.

This retrofit kit is available as an optional accessory for all models in the field. To purchase this kit, contact Enstrom Customer Service and specify Kit No. 28-13312-1.



Installation - Static

1. Remove the AN364-820 nut from the 28-13232 shaft.
2. Remove the existing 28-13237 washer and discard it.
3. Install 28-13313 strut in its place. Install the new AN960-C816 washer and AN364-820 nut to a snug fit, allowing the 2 8-13313 strut to pivot.
4. Install the 28-13311 idler stabilizer bracket to the 28-11100-4 pylon tube. Slide the bracket to meet the 28-13313 strut, align all three attach points, and torque up the two AN3-11A bolts.
5. Assemble the AN4-5A bolt, two ¼-inch Harper washers and AN365-4 nut connecting the strut and the bracket. Tighten to a snug fit.

Final Adjustment

1. Track the idler per the rigging instructions defined in Section 8 of the Enstrom Maintenance Manual.
2. Torque down the AN4-5A bolt which will fix the location between the 28-13313 strut and the 28-13311 bracket.
3. Torque the AN364-820 nut on the 28-13232 shaft.

Note: If future tracking is required, loosen only the AN364-820 nut and the AN4-5A bolts. Retorque them after tracking is completed.